

PLX20 Structural Comparisons

Alternative to Flitch Beam

Prolam® sizes are based on equivalent deflection. These tables are for guidance only, and any Prolam substitution should be verified against the complete selection chart or the Prolam Specifier: specifier.prolamnz.com. Alternatives may not be suitable for all situations.

Flitch Beam	Prolam PL8 Alternative	Prolam PL12 Alternative	Prolam PLX20 Alternative
FB15L	190 x 63	140 x 90 or 190 x 42	-
FB20M	290 x 90	240 x 90	240 x 90
FB25L	290 x 90	290 x 63	240 x 90
FB25M	360 x 90 or 315 x 112	315 x 90 or 290 x 112	290 x 90
FB30M	405 x 90	360 x 90	290 x 90*

*PLX20-290x90 is the closest equivalent to FB30M.

This table applies only to Prolam products.

Deflection Comparison

4.8 m Beam Span: 4.45 kN/m UDL

6.0 m Beam Span: 1.82 kN/m UDL

Beam	Deflection (mm)
FB25L*	22.7
PLX20-240x90	14.8
FB25M*	13.5
PLX20-290x90	8.0
FB30M*	7.6

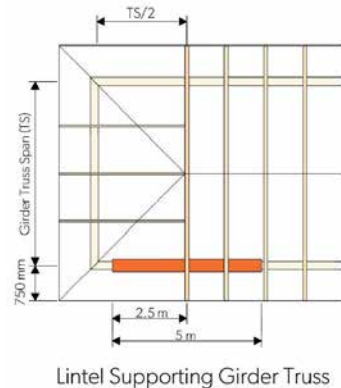
Comparison Table

Lintel supporting roof and ceiling or girder truss.

- Lintel Span: 5m
- Mid span deflection: 12mm
- Roof Pitch: 25°
- No Snow
- High Wind Zone (Pressure coefficients: 0.9 up, 0.4 down)
- Lintels restrained along their top edge at 900mm centres

Beam	Supported roof width (mm)	Supported girder truss span (m)	Approximate weight (kg)
PLX20-240x90	6.85	6.10	74.9
PLX20-290x90	14.0	10.2	91.5
FB25L	4.25	NA	106.6
FB25M/250PF8	7.55	6.60	125.1
FB30M/300PF8	15.3	10.9	151.5
hyONE-240x90	5.00	NA	64.8
hyONE-300x90	11.3	8.80	81.0
GL17-230x85	4.3	NA	63.5
GL17-260x85	6.9	6.10	72.0
GL17-295x85	10.7	8.50	81.5

The table is for comparison only, and any Prolam product should be verified against the complete selection chart or the Prolam Specifier.



Comparison Table

Floor beam

- Supported floor span: 6 m
- Deflection limit: 12mm
- Floor weight: 0.4 kPa
- Floor imposed load: 1.5 kPa
- Wall height: 2.4 m
- Wall weight: 0.3 kPa

Beam	Maximum Beam Span (m) Supporting Floor	Maximum Beam Span (m) Supporting Floor and Wall	Approximate weight (kg/m)
PLX20-240x90	4.39	4.16	16.9
PLX20-290x90	5.1	4.9	20.6
FB25L*	3.27	3.01	18.5
FB25M*	4.25	3.91	23.9
FB30M*	5.09	4.74	28.9
hyONE-240x90	4.15	3.93	13.0
hyONE-300x90	4.9	4.66	16.2
GL17-230x85	4.0	3.79	12.7
GL17-260x85	4.4	4.16	14.4
GL17-295x85	4.9	4.58	16.3

The table is for comparison only, and any Prolam product should be verified against the complete selection chart or the Prolam Specifier.

